

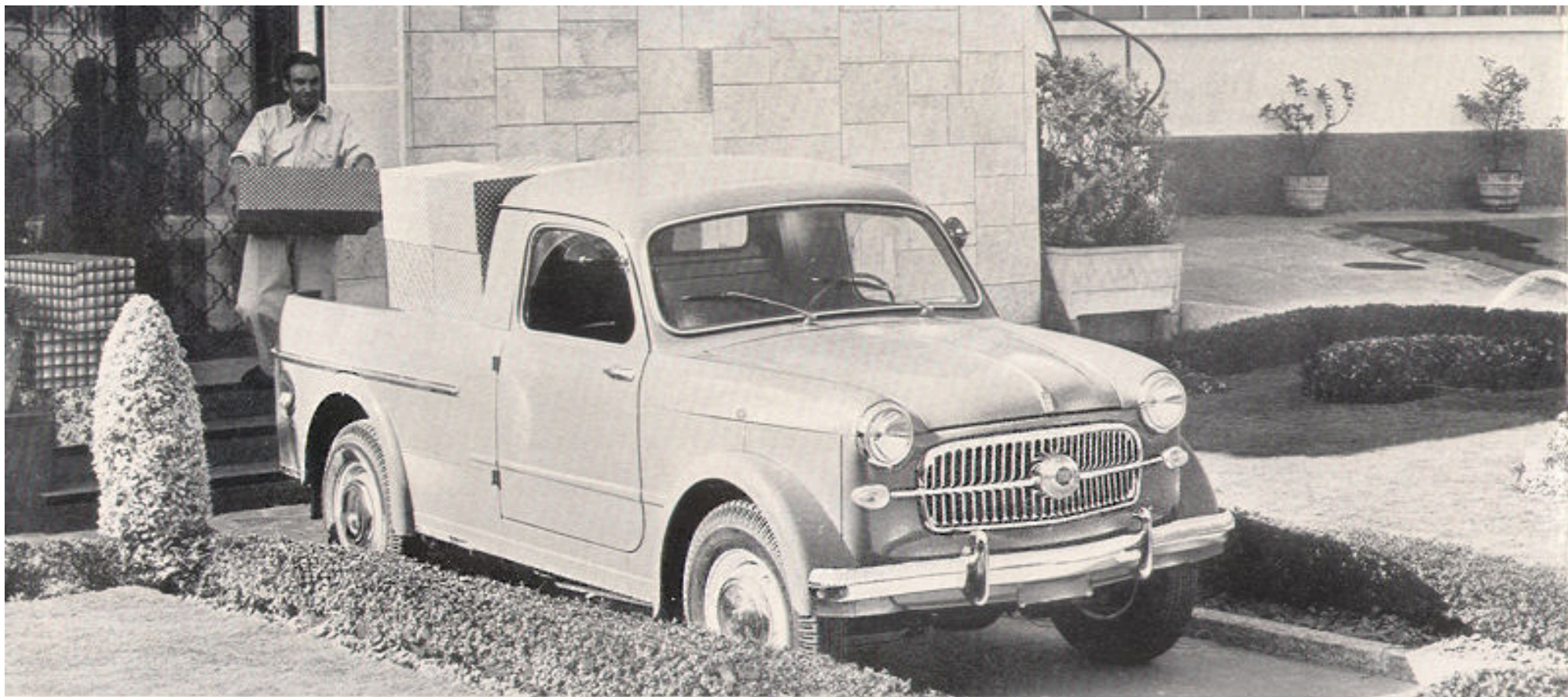
A black and white photograph showing the front three-quarters view of a silver Fiat 1100 Commercial van. The van is parked in front of a light-colored building with vertical paneling. The image features several text overlays: 'FIAT' in white on a red background in the top left; '1100' in white on a black background with a '1' below it in the top center; 'Commercial' in black text to the right of the van; and a red box in the bottom right containing the text 'The Commercial Elevenhundred: a vehicle of many uses' in black.

FIAT

1100
1

Commercial

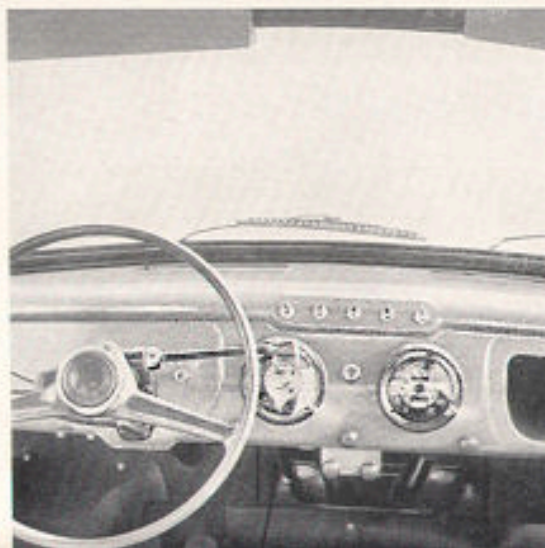
***The Commercial
Elevenhundred:
a vehicle of many uses***



Enclosed cab, side panels in one piece with side panelling of body, all-metal construction with stressed internal framework. Two doors. Back of cab provided with large centre window of safety glass with protective metal bars. Two seats. Box body with fixed sides and drop tailboard.

gross load 17.3/4 Cwt (900 kg)
speed about 65 miles (105 km) p. h.

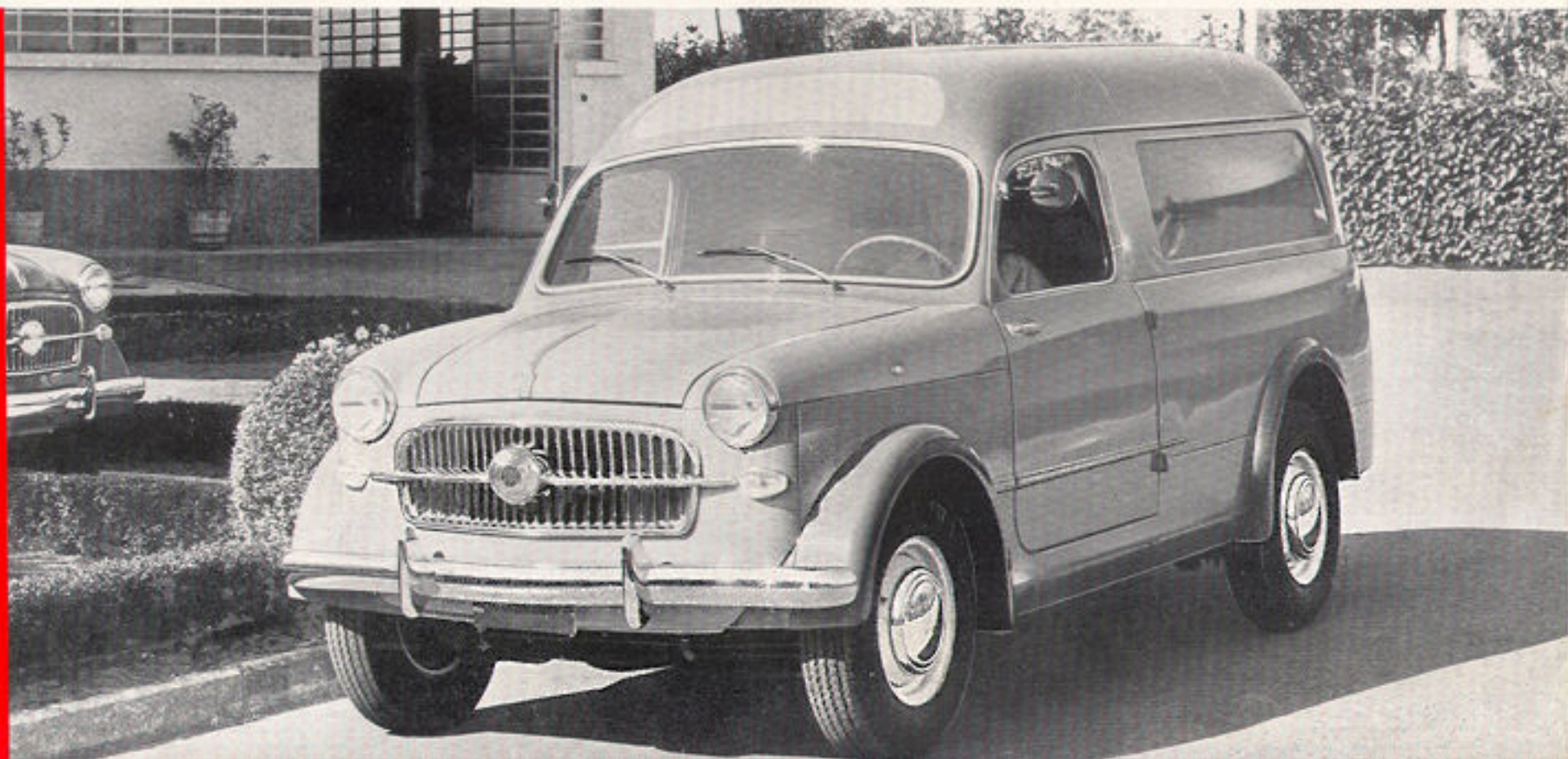
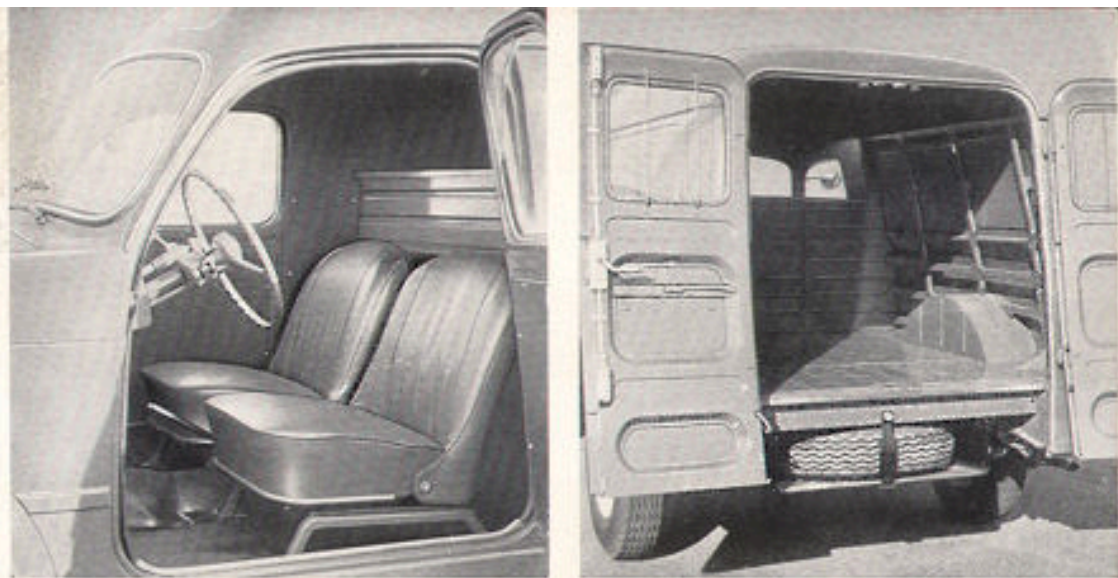
FIAT "1100 l" light Lorry

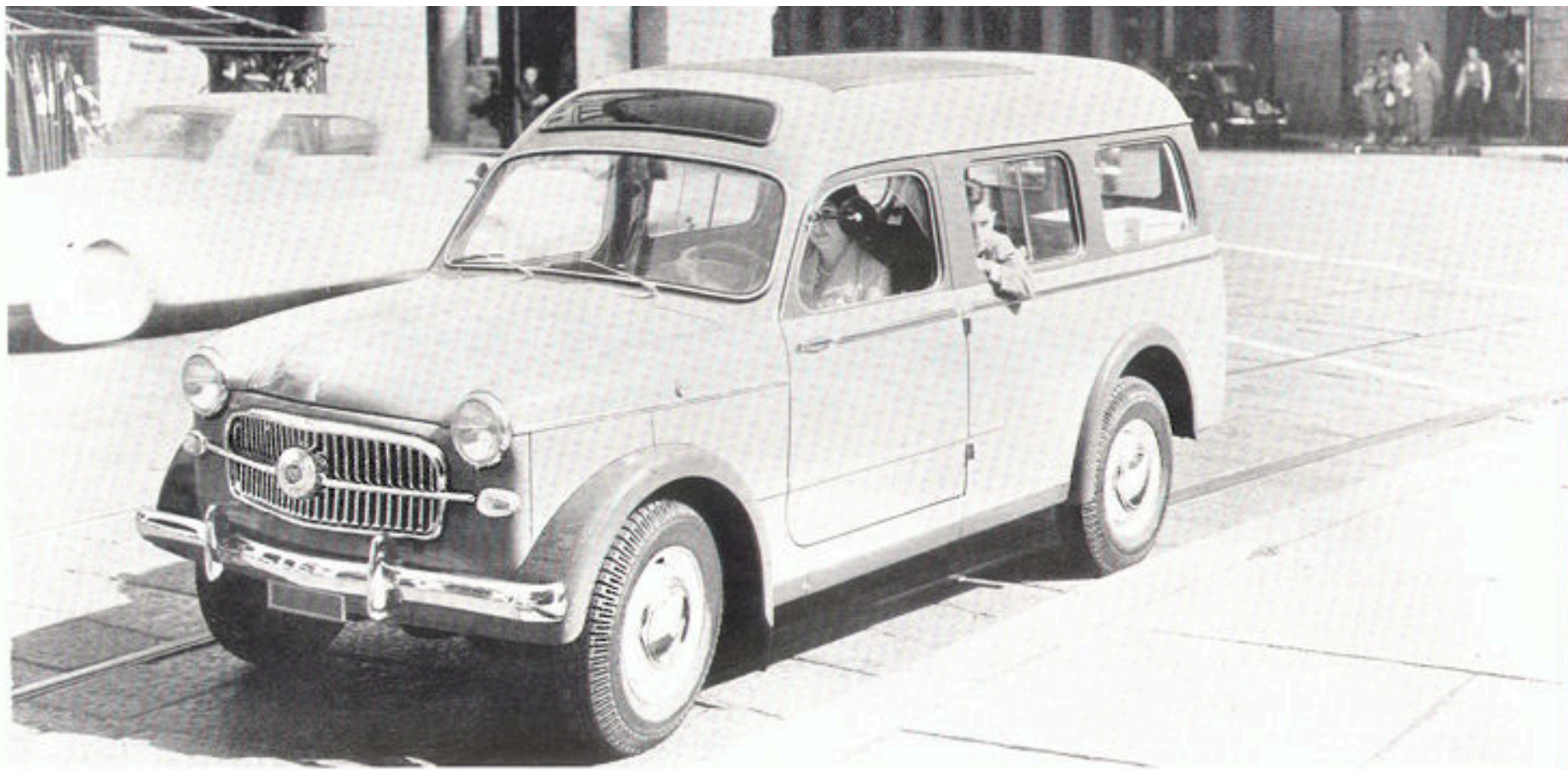


FIAT "1100 I" Van

Enclosed cab forming single unit with body. All-metal body with stressed internal framework. Two side doors. Double rear door. Two seats. Partition between cab and body with large aperture at the top.

gross load 17.3³/₄ Cwt (900 kg)
speed about 65 miles (105 km) p. h.





A handsome, handy and speedy vehicle, which appeals particularly to those who need a sturdy van for the carriage of goods and which can be quickly converted for use as a comfortable touring "5-seater".

With two persons a nett load of 1500 lbs. (675 kg.) can be carried. With five persons the nett load is reduced to 1025 lbs. (465 kg.)

Two side doors and one at the rear - 3 lights each side - Sunshine roof with blue glass in front part - Two bucket seats in front with fold down backrests to facilitate access to the interior - Fold-down bench seat at back - When folded down the cushion protects the front seats and marks the limit of the luggage space - The backrest folds flat to complete the loading platform.

speed about 65 miles (105 km) p. h.

FIAT "1100 I" Station Wagon

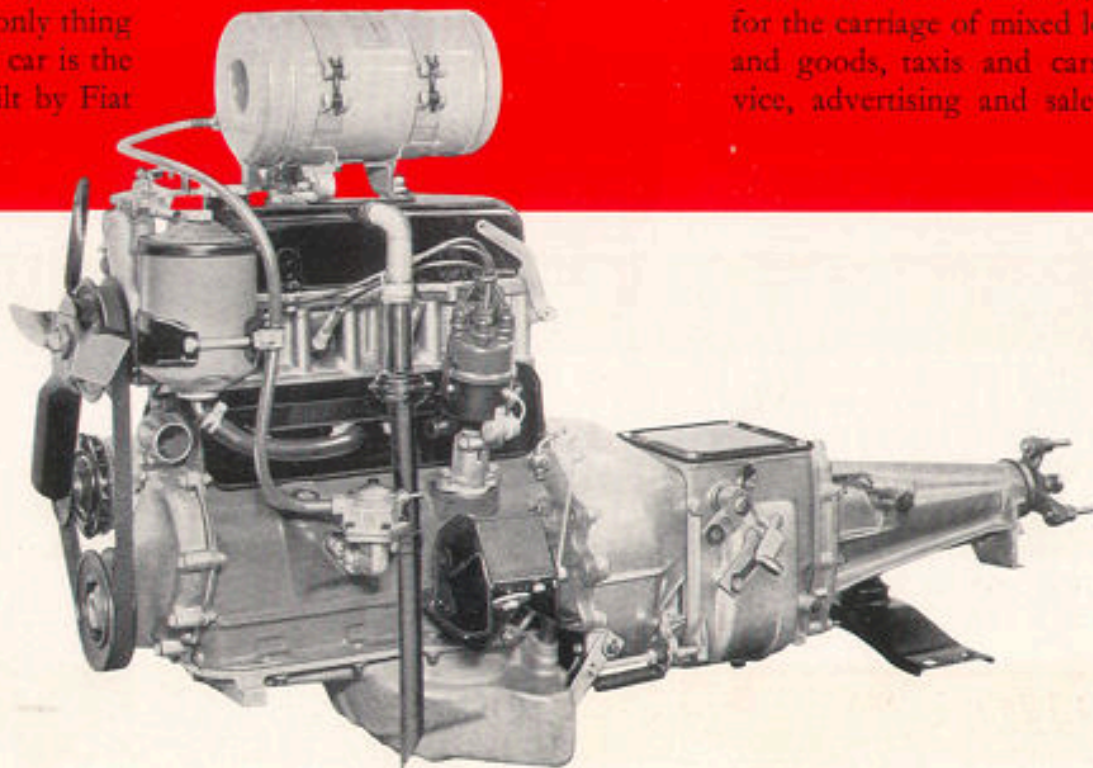


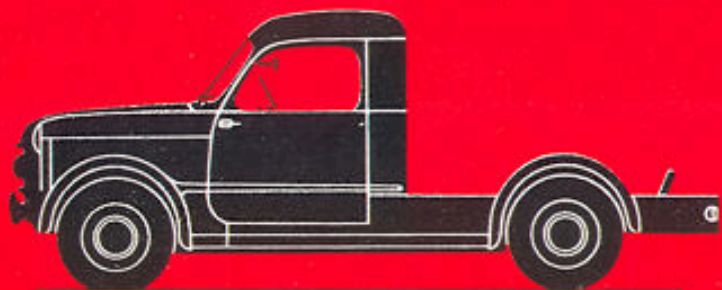
THE *Commercial Eleventhundred*

The "1100 Industrial" (1100 I) is classed as a derivative of a car, a vehicle which although retaining features and performances not dissimilar from those of a passenger car, is used for light transport, particularly of goods. Structurally, however, the "1100 I" is not derived from the 1100 but is really a different vehicle which, among other characteristics, has a conventional chassis (not integral construction); it has more robust, specially designed suspension, brakes, transmission and rear axle and larger tyres. Practically the only thing it has in common with the 1100 car is the power unit. This vehicle is built by Fiat

as a Van, light Lorry and Station Wagon. With its outstanding speed and low consumption (9 liters per 100 km - 31 miles per gallon), it fulfills the requirements of a large class of users. It is a vehicle which will prove most useful to small, medium and big Firms, to tradesmen, handicraft workshops, public bodies and institutes. Fiat supplies the "1100 I" also as a bare chassis or as a chassis with cab only, as it is peculiarly suited to take special bodies such as ambulances, station wagons for the carriage of mixed loads of persons and goods, taxis and cars for hire service, advertising and sales vehicles, etc.

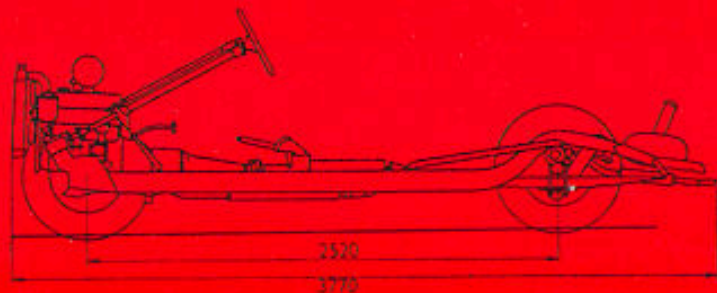
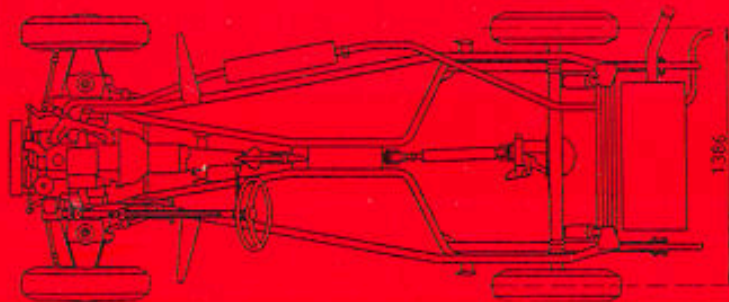
40 HP engine





FIAT "1100 I" with cab only

The same cab as the light Lorry. The rear part of the body, mounted on the conventional chassis, can be made by any bodymaker to customer's specifications for many and varied uses.



technical data

Engine, 4 cylinders, 1089 cc. Bore 68 mm, stroke 75 mm. Compression ratio 7 to 1. Maximum power at 4400 r.p.m. 40 h.p.

Clutch, single plate, dry with plate mounted on flexible hub.

Gearbox with 4 speeds and reverse. Synchromesh gears in 2nd and 3rd speeds. Free ring synchroniser on 2nd, 3rd and 4th speed gears. Gear shift operated from steering column.

Transmission shaft in two portions.

Rear axle casing of pressed sheet steel with hypoid final drive gears. Ratio 8/43.

Front suspension by wishbones with coil springs and telescopic hydraulic shock absorbers. Anti-roll bar.

Rear suspension by leaf springs with telescopic hydraulic shock absorbers. Anti-roll bar.

Steering by worm and roller. Independent drag links to each wheel.

Hydraulic brakes on all four wheels, emergency hand brake on rear axle.

Petrol tank holding 44 liters (9.1/2 gallons).

Disc wheels with 4 1/2 K rims and type 6.70-14/T tyres.

Chassis frame: wheelbase 2520 mm. (8' 3.1/4"), front track 1323 mm. (4' 4.3/32"), rear 1386 mm. (4' 6.9/16").

Electrical equipment 12 volts. 180 Watt dynamo with 3-element voltage regulator. 32 amp/h battery. Headlamps and regulation lights. Interior lighting. Electric horn. Controls under steering wheel for operating lights and direction indicators which are automatically cancelled when the steering wheel returns to zero. Plug-in point on instrument panel for inspection lamp. Electric screen wiper.

Heater with electric fan.

The descriptions and illustrations in this folder are given merely as general indications and are not binding. FIAT therefore reserve the right, whilst retaining the basic features of the models herein described and illustrated, to make at any time and without notice, those alterations to parts, fittings or equipment of accessories that they may deem fit to make by way of improvement or for any manufacturing or commercial reason.